

Setting up a USB DUN connection

Using the USB cable that came with your Palm Treo 700wx smartphone, you can connect your computer to the internet using your smartphone as a wireless modem. The following instructions describe how to enable your smartphone as a USB dial-up (DUN) networking modem.

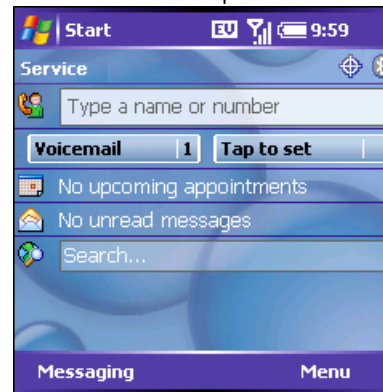
To use USB DUN, you need to download and install the required file onto your computer, and then enter the connection settings. These steps are described here. You need to perform these setup steps only once; after that, you can easily access the Internet from your computer by following the steps in “Using a USB DUN connection at other times,” below.

Your wireless service provider may have a custom application for you to use to set up your smartphone as a USB DUN modem. This application is typically known as a connection manager client that installs onto your computer. Check with your wireless service provider to see if this type of application is available. If it is, you do not need to download or install the file described here.

NOTE: If you receive or place a phone call while a USB DUN connection is active, the call goes through, but the DUN connection is suspended if you are on an EVDO network and terminated if you are on a 1xRTT network. If you are on an EVDO network (as indicated by “EV” in the title bar of the Today screen), the data session is automatically resumed when you end the call. If you are on a 1xRTT network (as indicated by “1x” in the title bar of the Today screen), you can restart the connection while on the call so that you can send and receive data even while you are talking.

For EVDO networks, you can set an option so that the data session is not interrupted when you place or receive a call. See “Changing data settings.”

Look here for the “EV” or “1x”





NOTE: If you have a push email solution set up on your smartphone, such as Microsoft Exchange ActiveSync®, push email does not take place while the USB DUN connection is active.


Downloading the software to your PC

1. Go to www.palm.com/us/support/DUN.
2. Follow the links to download the USB DUN driver software.
3. Select **Download**.
4. Select **Save**, and then select the location where you want to save the ZIP file.
5. When download is complete, open the ZIP file and extract the software file to the location you want.

Installing the software on your smartphone

1. On your smartphone, press **Start**  and select **Programs**.
2. Select **Modem Link** .



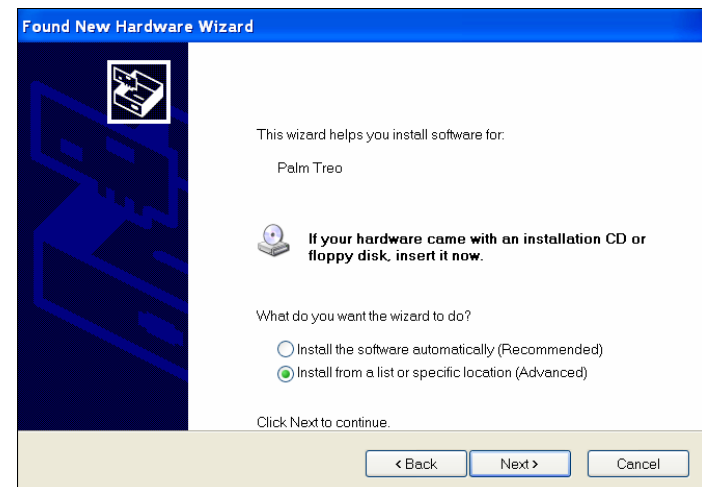
3. If a message appears stating that ActiveSync may not function properly if Modem Link is activated, select **OK**.
4. Select the **Connection** list, and then select **USB**.
5. Press **Activate**  (left action key).

IMPORTANT: When Modem Link is activated, you cannot synchronize using ActiveSync® software. Be sure to turn off Modem Link when you are done using your wireless connection to the Internet.

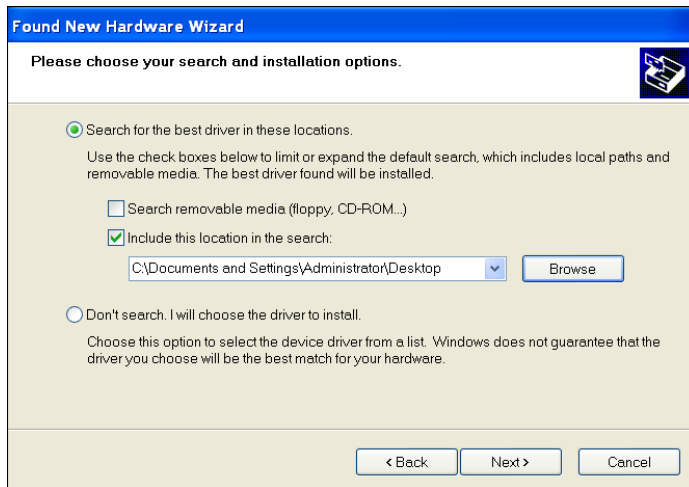
6. Connect your smartphone to your computer using the sync cable.
7. If the following screen appears, select **No, not this time**, and then click **Next**.



8. Select **Install from a list or specific location (Advanced)**, and then click **Next**.

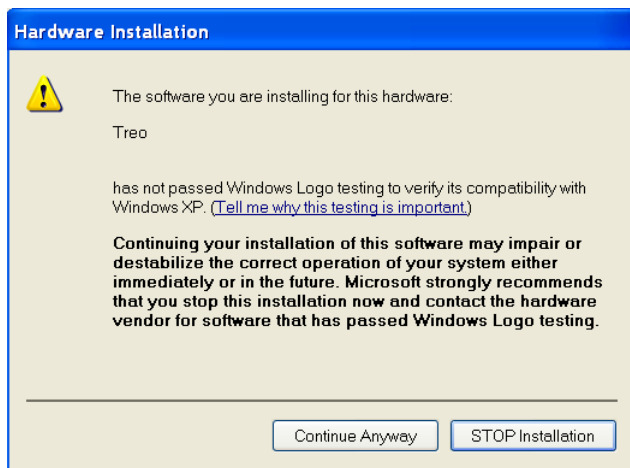


9. Make sure **Search for the best driver in these locations** is selected. Check the **Include this location in the search box**, click **Browse**, and then navigate to the location where you extracted the software file.

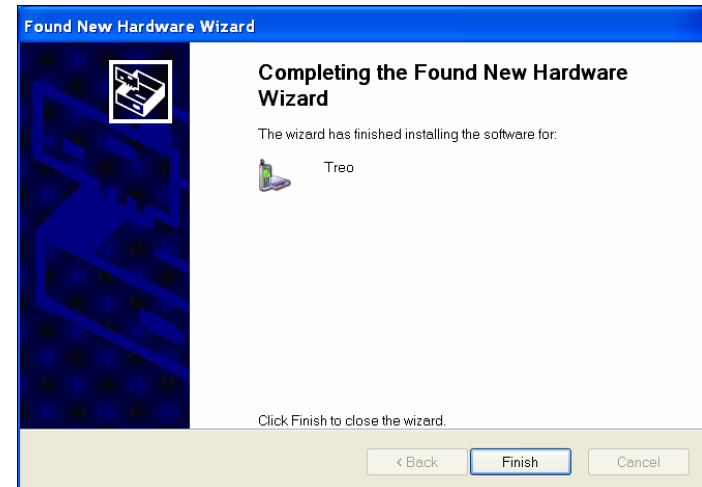


10. When the software location is displayed, click **OK**. Click **Next**.

11. Click **Continue Anyway**.



12. Click **Finish**. The software is now installed on both your computer and your smartphone.



Setting up your smartphone as a wireless modem

BEFORE YOU BEGIN: Check with your wireless service provider for the following:

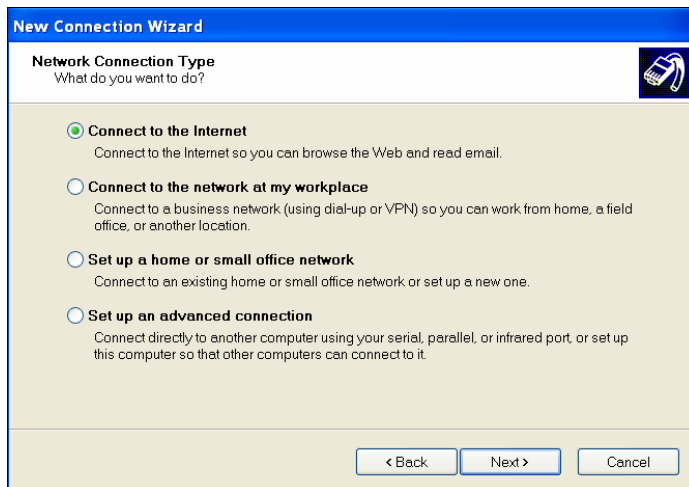
- Obtain the dial-up number you need to access your provider's network; for example “*#777.”
- See if you need to enter a username and password to access your provider's network. If so, make sure you have the correct username and password.

NOTE: The steps included here work for most wireless service providers. If you are unable to use your smartphone as a wireless modem after completing these steps, contact your provider to see if they have a custom procedure.

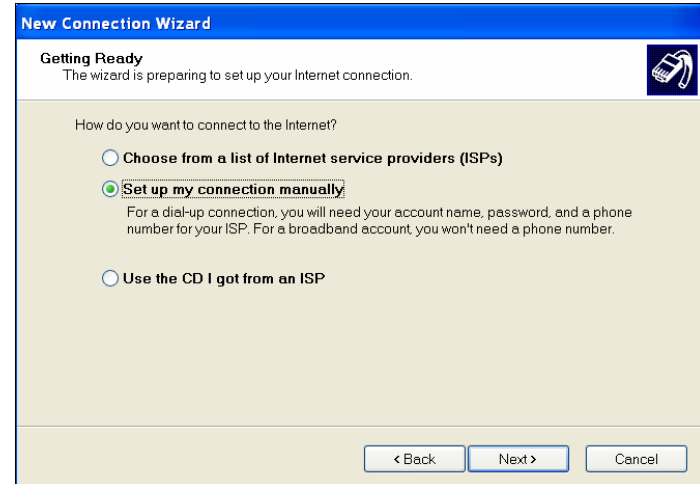
1. On your computer, double-click **My Computer**.
2. Select **Control Panel > Network Connections**
3. Click **File** in the upper-left corner, and then click **New Connections**. The New Connection Wizard opens. Click **Next**.



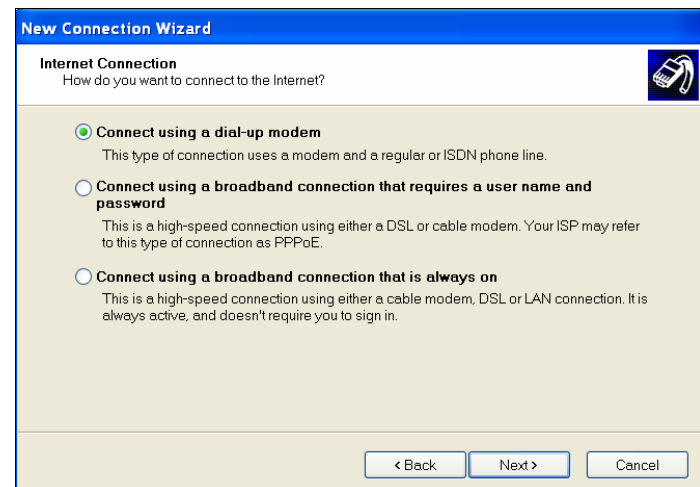
4. Select **Connect to the Internet**, and then click **Next**.



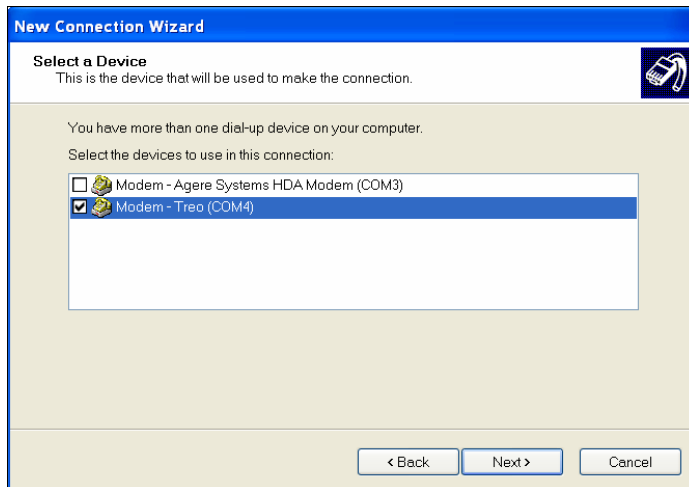
5. Select **Set up my connection manually**, and then click **Next**.



6. Select **Connect using a dial-up modem**, and then click **Next**.

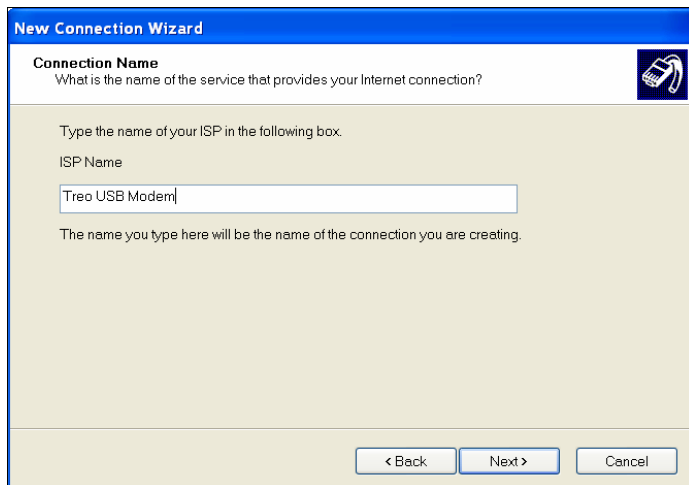


7. If a screen such as the following appears, stating that you have more than one dial-up device on your computer, check the box next to the modem representing your smartphone. Make sure all other boxes are unchecked. Click **Next**.

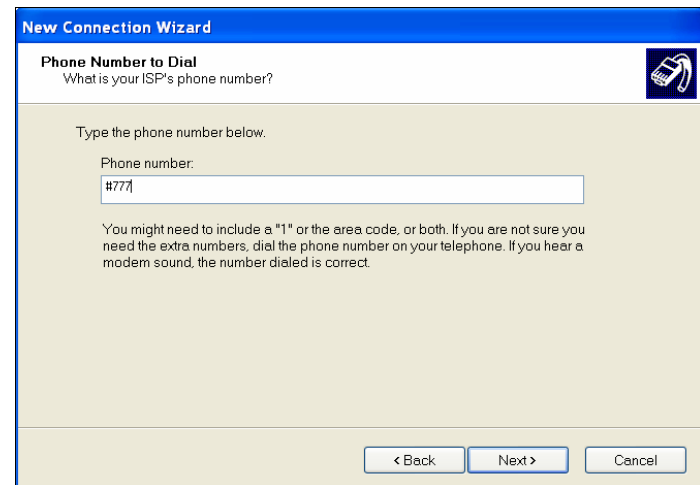


8. Make up a name for the connection—for example, “Treo USB Modem”—and then click **Next**.

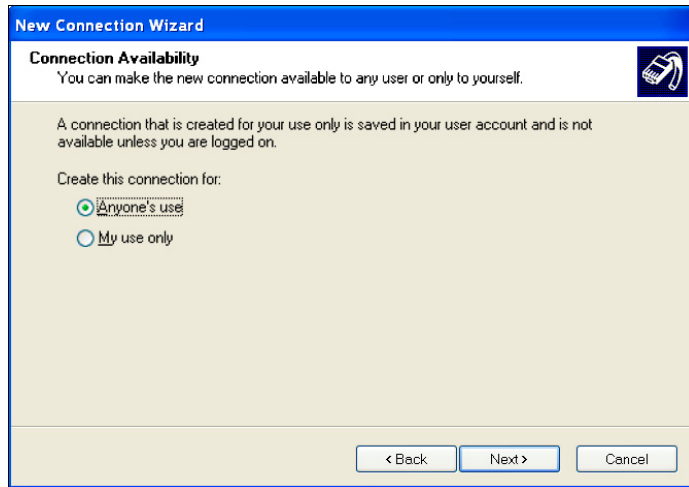
NOTE: Although the field is labeled “ISP Name,” do not enter the name of your wireless service provider or email provider in this field. Make up a name for your USB DUN connection and enter it here.



9. In the Phone number field, enter the dial-up number you obtained from your wireless service provider, and then click **Next**.



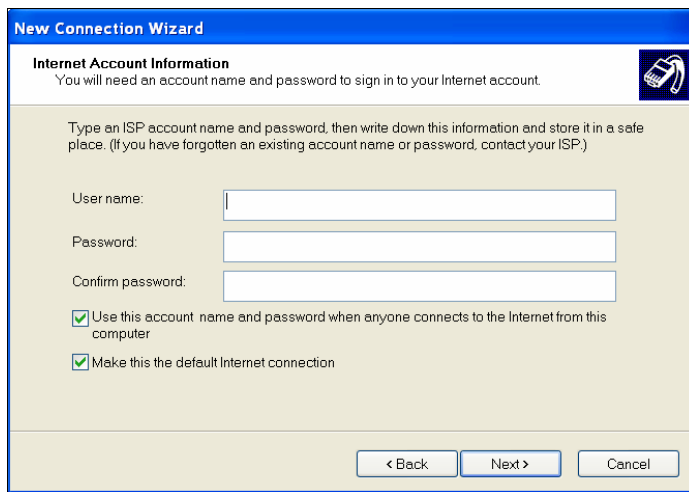
10. If the following screen appears, select one of the following options:
 - For enhanced security, select **My use only**. When this option is selected, your computer must be logged into your provider's network before anyone can access the Internet over the USB DUN connection.
 - Select **Anyone's use** to allow anyone who uses your computer to access the Internet over the USB DUN connection.



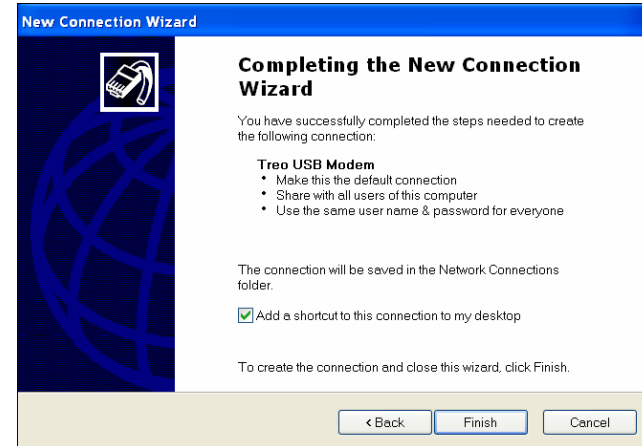
11. Click **Next**.

12. If your wireless provider requires a username and password, enter them here. Otherwise, leave these fields blank. Click **Next**.

NOTE: For most wireless service providers, you can leave these fields blank



13. Check the **Add a shortcut to this connection to my desktop box** (recommended), and then click **Finish**.



Using a USB DUN connection

Using a USB DUN connection for the first time



After you complete setup, the following screen appears.

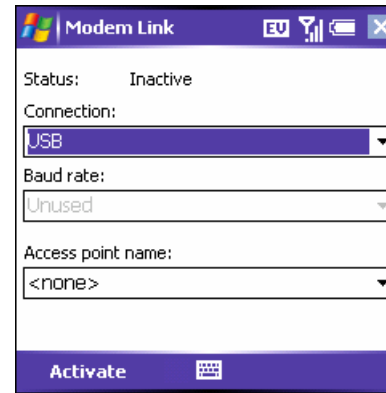



Click **Dial** to make a DUN connection and access the Internet from your computer.

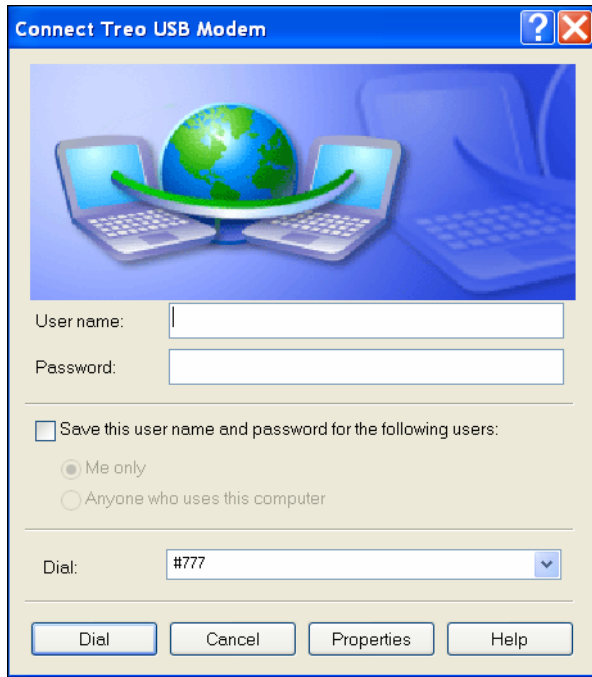
Using a USB DUN connection at other times

Follow these steps to connect to the Internet using a USB DUN connection anytime after initial setup.

1. On your smartphone, press **Start**  and select **Programs**.
2. Select **Modem Link** .



3. Select the **Connection Type** list, and then select **USB**.
4. Press **Activate**  (left action key).
5. Connect your smartphone to your computer using the sync cable.
6. On your computer, open the dialer screen by doing one of the following:
 - Double-click the desktop shortcut icon if you created one.
 - Click **Start > Control Panel > Network Connections**, and then click the name you gave to the USB DUN connection; for example, "Treo USB Modem."



7. Click **Dial**. You are now connected.

NOTE: If you have a push email solution set up on your smartphone, such as Microsoft Exchange ActiveSync®, push email does not take place while the USB DUN connection is active.

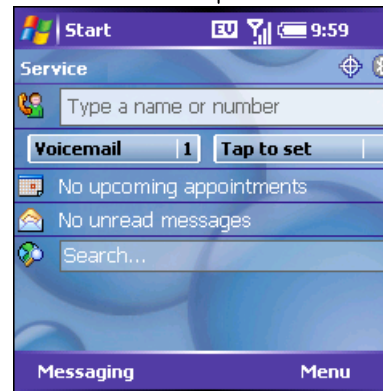
Restarting a USB DUN connection

If you receive or place a phone call while a USB DUN connection is active, the call goes through, but the DUN connection is suspended if you are on an EVDO network and terminated if you are on a 1xRTT network. If you are on an EVDO network (as indicated by “EV” in the title bar of the Today screen), the data session is automatically resumed when you end the call.


If you are on a 1xRTT network (as indicated by “1x” in the title bar of the Today screen), you can restart the connection while

on the call so that you can send and receive data even while you are talking.

Look here for the “EV” or 1x




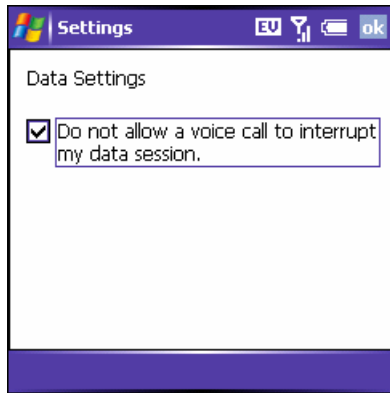
For both network types, you can restart the connection after ending the call. Follow these steps to restart a connection either during or after a call.

1. Disconnect the existing connection (which got terminated by the phone call): right-click the wireless connection icon  in the taskbar in the lower-right corner of your computer screen and select **Disconnect**.
2. Start a new connection by following steps 6 and 7 in “Using a USB DUN connection at other times,” above.

Changing data settings

For EVDO networks, you can set an option so that the data session is not interrupted when you place or receive a call.

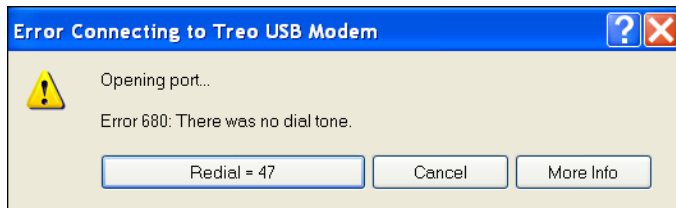
1. Go to your Today screen.
2. Press **Menu**  (right action key).
3. Select **Preferences > Phone Settings**.
4. Select the **Services** tab, and then select **Data settings**.
5. Check the **Do not allow a voice call to interrupt my data session** box.



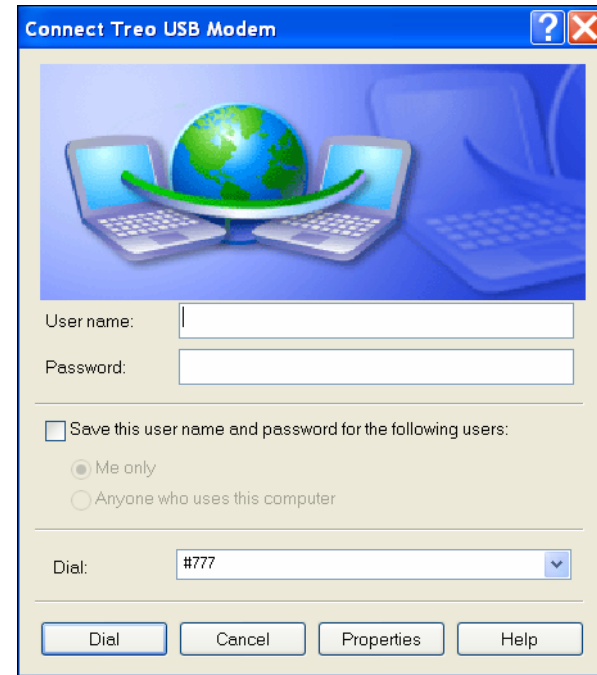
Troubleshooting

If you attempt to make a USB DUN connection but cannot access the Internet, wait a few seconds, and then click **Dial** on the dialer screen again.

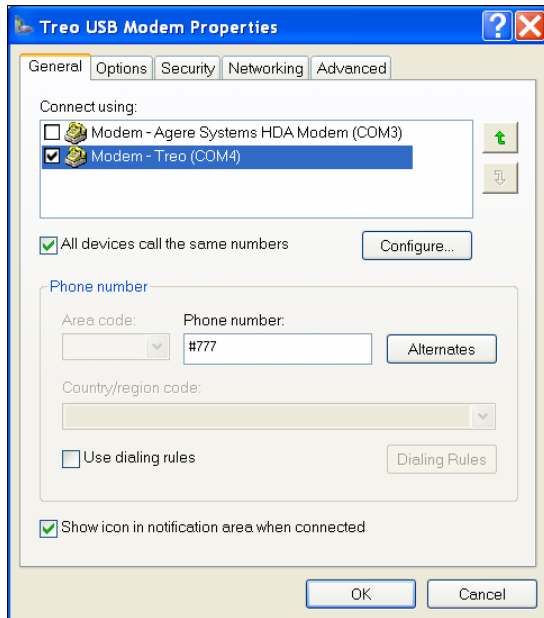
If an error message appears, try the following:



1. Click **Cancel** to close the error message.
2. On the dialer screen that is displayed, click **Properties**.



3. On the Modem Properties screen, uncheck the box(es) next to any other modem connection on the list.



4. Check the box next to your USB DUN modem connection.
5. Click **OK**.
6. On the dialer screen, click **Dial**.





If the problem persists, try restarting your computer and starting a new connection by following steps 6 and 7 in “Using a USB DUN connection at other times,” above.



If you still cannot connect, contact Technical Support, or contact your wireless service provider to see if they have custom setup steps.

Ending a connection

You must terminate a USB DUN connection in order to synchronize your smartphone with your computer using ActiveSync desktop software. You terminate the connection first on your smartphone, then on your computer.

1. On your smartphone, press **Start**  and select **Programs**.
2. Select **Modem Link** .



3. Press **Deactivate**  (left action key).
4. On your computer, right-click the wireless connection icon  in the taskbar in the lower-right corner.
5. Select **Disconnect**.